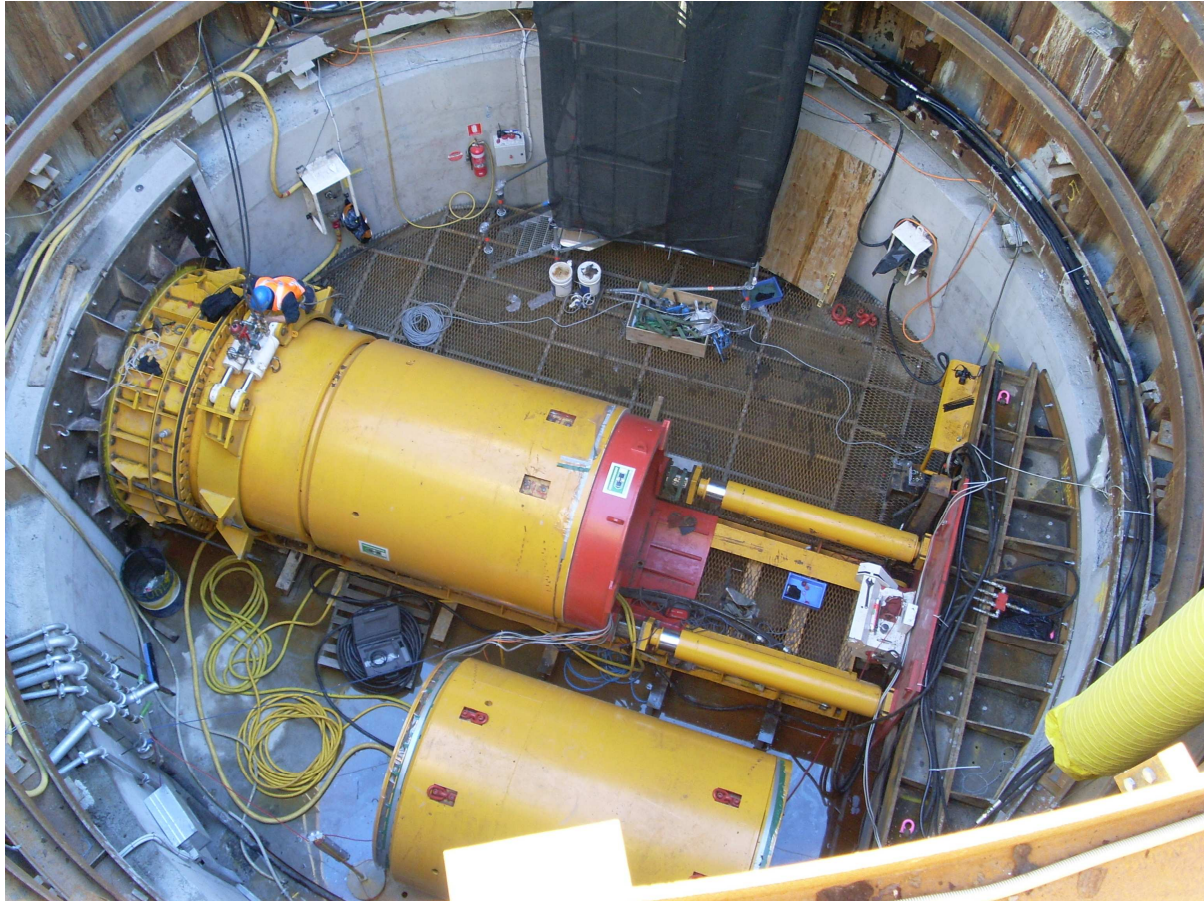


CASE STUDY: WATER DELIVERY ALLIANCE



View into the Canal Rd shaft, comprising 6 walers
Source: Daniel Smolenski - WDA

Rollco's flexible supply arrangements and a commitment to constant never-ending improvements has helped keep the desalination plant tunnelling on track.

Water Delivery Alliance, a partnership between McDonnell Dowell & Bovis, has the task of micro tunnelling across inner Sydney to house the pipeline connecting the Desalination plant and Sydney's main water supply.

Each time the pipeline changes direction, a new shaft needs to be sunk and structural work completed. Shafts can be either round or square in shape and are either concrete or steel in structure.

Rollco was selected from local and interstate companies to supply steel walers, fabricated to specification and delivered to site.

"From the outset, Rollco's pricing structure was very competitive against interstate rivals" *Neil Bracken, Engineering Manager – Tunnel works* "As the project progressed, it was necessary to alter delivery times – both bringing in and delaying- due to external factors, Rollco was more than able to meet our demand changes"

Working with the engineers at the Water Delivery Alliance, Rollco has successfully delivered walers ranging from 9350mm to 13172mm in diameter in column sizes ranging up to 310UC158. Weekend & part deliveries allowed installation to proceed without major delays when site work progressed faster than anticipated. To date, over 300T of steel work has been supplied to the project.

"This project has allowed us cement our place in the tunnelling sector" adds *Rod Watts, Manger - Rollco* "With the requirement for full fabrication and fluid delivery times, Rollco has been more than able in matching the demands placed on us"

This is not the first tunnel project that Rollco has been involved with, successfully supplying Baulderstone Hornibrook with tunnel sets for the Cross City Tunnel followed by the supply of tunnel sets & fire pipe for the Lane Cove Tunnel in Sydney's road network.

"We believe that the quality of our workmanship and the skill of our operators to overcome issues where design and production have not aligned means that Rollco is well placed to assist and supply on most major infrastructure projects requiring tunnel sets or walers" offers *Assistant Manager, Neil Hierlehy*

Not confined to universal beams, Rollco has also supplied several fabricated cones, cylinders and arcs in plate sizes up to 40mm thick.

Rollco's experience in supplying tunnel sets, walers and bulkheads has seen allowed us to also successfully supply to mines and other underground operations.

Comprehensive information about the desalination plant and tunnel work can be found at www.sydneywater.com.au

For more information about rolling universal columns or any other of Rollco's processes, log onto www.rollco.com.au or call our Sydney office on (02) 9772 4188.

