



Rollco

STEEL PROCESSING SERVICES

› ACKNOWLEDGEMENTS

Rollco would like to thank an extensive group of customers whose continued loyalty and referrals have helped us achieve the success and market leadership we guard jealously.

Secondly, Rollco would like to thank its employees whose dedication and skill have allowed for a consistently high standard, the continual improvement and technical development seen so far.

Finally, to our suppliers, thank you for your assistance during numerous product developments, projects and general support year in /year out.

› COPYRIGHTS

This publication is © Rollco Pty Ltd 2009.

Neither this publication nor any part may be reproduced, stored in or introduced into a retrieval system, or transmitted in any form or by any means electronic, mechanical, photocopying, recording or otherwise, without the prior written permission of the copyright owner.

› LEGAL

Rollco believes that the information contained within this publication is true at the time of printing. Whilst every effort has been made to ensure the complete accuracy of this publication, Rollco cannot be held responsible for any errors or omissions.

CONTENTS



01: INTRODUCTION



02: UNIVERSAL BEAMS & COLUMNS



03: PIPES



04: CHANNEL



05: ANGLE IRON



06: PLATE ROLLING



07: PRESS BRAKE



08: PURLINS



09: INFRASTRUCTURE



› FRONT COVER

IAN THORPE AQUATIC CENTRE

Rollco was chosen to supply the rolling services for a large number of 273 Outside Diameter pipes and RHS that form the wave-like roof structure.

› IMAGERY

Josh Brightman;
Hansen Yunken;
Water Deliver Alliance;
Leighton Group;
Rollco



01: INTRODUCTION

Established in 1982, Rollco Pty Limited has been at the forefront in providing the construction and manufacturing industry with quality curved steel and alloy products. With strategically located premises at Revesby in Sydney's western suburbs, Rollco is well positioned to service NSW and the larger Australian Market.

Cold rolling or roll bending of steel and alloy material is recognised world wide as the most economical process to produce curves or bends in sectional or plate material that can be used as a simple sign post, right through to a bridge girder or structural roof beam.

Since our inception, we have remained focused on achieving customer satisfaction . We now offer a vast array of services that enable most requirements to be processed under one roof, eliminating the need for multiple orders & deliveries.

Through a network of highly skilled suppliers, Rollco is able to offer additional services such as fabricating, plate profiling & galvanising which allows the client the option of one quote, one order and one supplier.

Apart from our comprehensive range of specialised machinery & tooling, Rollco enjoys the benefit of employing a dedicated team of highly skilled and experienced operators. Our team looks forward to challenging work whilst ensuring the highest quality of workmanship and contractual requirements are achieved. At all times this is documented through a quality system based on AS/NZS ISO 9001 : 2000.

It is Rollco's commitment to continually address customer & industry demands and expectations, thus ensuring Rollco remains a leader in our chosen field of supplying quality steel and alloy processing services that meet the needs of Australian industries.

02: UNIVERSAL BEAMS & COLUMNS



› PRODUCT

Universal Beams & Columns are the staple of the fabrication industry. Rollco has a range of machines that can curve the smallest through to the largest sections.

Whether it be curved through the X-X or Y-Y axis, we have the expertise to roll some of the tightest curves in the country making Rollco the first choice in section rolling.

› CAPABILITIES

Universal columns up to 310 UC 158 X-X & Y-Y
Universal Beams up to 610 UB 125 X-X & Y-Y
Beams up to 1000 WB 322 Y-Y

For a full range of sizes available, log on to www.rollco.com.au or call our Revesby office on (02) 9772 4188

› 700WB rolled Y-Y axis



03: PIPES

› PRODUCT

Servicing the architectural and safety industries, pipe offers the beauty of sleek modern curves on urban structures whilst doubling up for the hidden duty of fire suppression in places like Sydney's Cross City Tunnel.

› CAPABILITIES

A full complement of tooling allows sizes up to 356 diameter pipe to be curved at our Revesby facilities

For more information, please log on to www.rollco.com.au or call the Revesby office on (02) 9772 4188



› IAN THORPE AQUATIC CENTRE
Ultimo Sydney NSW

04: CHANNEL

> PRODUCT

Curved & Sweeping staircases can form a spectacular feature in an office or residence.

Rollco is very familiar with these uses and we are well versed in the forming of PFC into curved pieces for structural and architectural applications.

> CAPABILITIES

PFC can be rolled in 3 orientations;

Our capability through advanced procedures and skilled workforce allows PFC to be curved in all three orientations, toe in, toe out and on edge, as well as in two planes or even three dimensional as seen here.

TOE OUT

300mm radius, and up to a size of 380 x 100

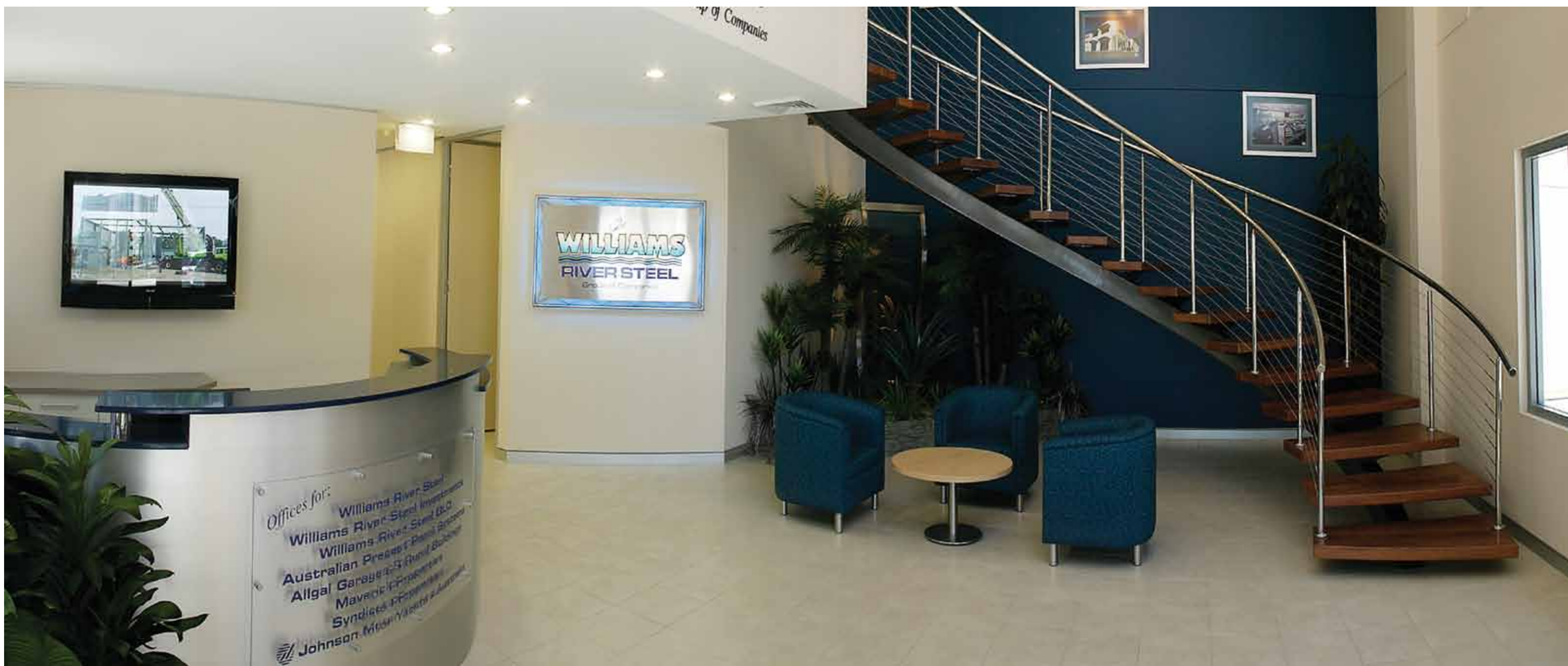
TOE IN

300mm radius and up to a size of 380 x 100

ON EDGE

2000mm radius up to 380 x 100

For more information, please log on to www.rollco.com.au or call the Revesby office on (02) 9772 4188





05: ANGLE IRON

› PRODUCT

Rolled Steel Angle, Angle Iron or RSA is used heavily in construction and fabrication. The ability to form the angle toe in or out makes it very versatile in applications such as stiffening bands, lintels and flanges.

A third, not so common orientation is double toes in or out as a diamond. Rollco has the capability and experience to allow the rolling of double toes where required. Please call to confirm applicability to your application.

Our commitment to invest in the latest technology means the full complement of sizes available are suitable for our process.

RSA can be rolled in 3 orientations;

TOE OUT

150mm radius and up to a size of 200*200*20

TOE IN

200mm radius and up to a size of 200*200*20

Double toes in/out – Call for a quote

For more information, please log on to www.rollco.com.au or call the Revesby office on (02) 9772 4188

› ANTI THROW SCREENS

06: PLATE ROLLING

› PRODUCT

Cold rolling of plate is a world wide acknowledged process, enabling plate to be accurately and efficiently curved into a range of radial shapes for a multitude of uses.

Using a number of horizontal rolls, Rollco is able to process plate up to 50mm thick with width ranging to 3200mm producing single projects or regular items for the manufacturing industry.

› CAPABILITIES

Cylinders

Cones

Flanged cylinders

For more information, please log on to www.rollco.com.au or call the Revesby office on (02) 9772 4188



› *BUS SEATING BAY*
Olympic Park - Homebush,
Sydney NSW



07: PRESS BRAKE

› PRODUCT

Press Brake machines are a common and economical means of forming plate into various shapes.

Rollco investigated the market place for the best combination of size and tonnage to deliver the fullest service possible to Australian customers.

The search has led to the purchase of a 6m, CNC controlled press brake. Rated at 550T, it can deliver enough power to press 12mm mild steel at full width.

› CAPABILITIES

Complemented by a large range of tooling, most requirements can be accommodated. Whilst a range of specifications are available at www.rollco.com.au, listed are examples of our products;

› Stair treads and landings

› Square to rounds

› Cones

› Mild Steel plate up to 25mm thick to one meter long

For more information, please visit www.rollco.com.au or call the Revesby office on (02) 9772 4188



08: PURLINS

› PRODUCT

Working closely with architects and fabricators, Rollco developed ground breaking processes to enable the cold rolling of approximately 12 Km of purlins for the Dunc Grey Velodrome in Bankstown.

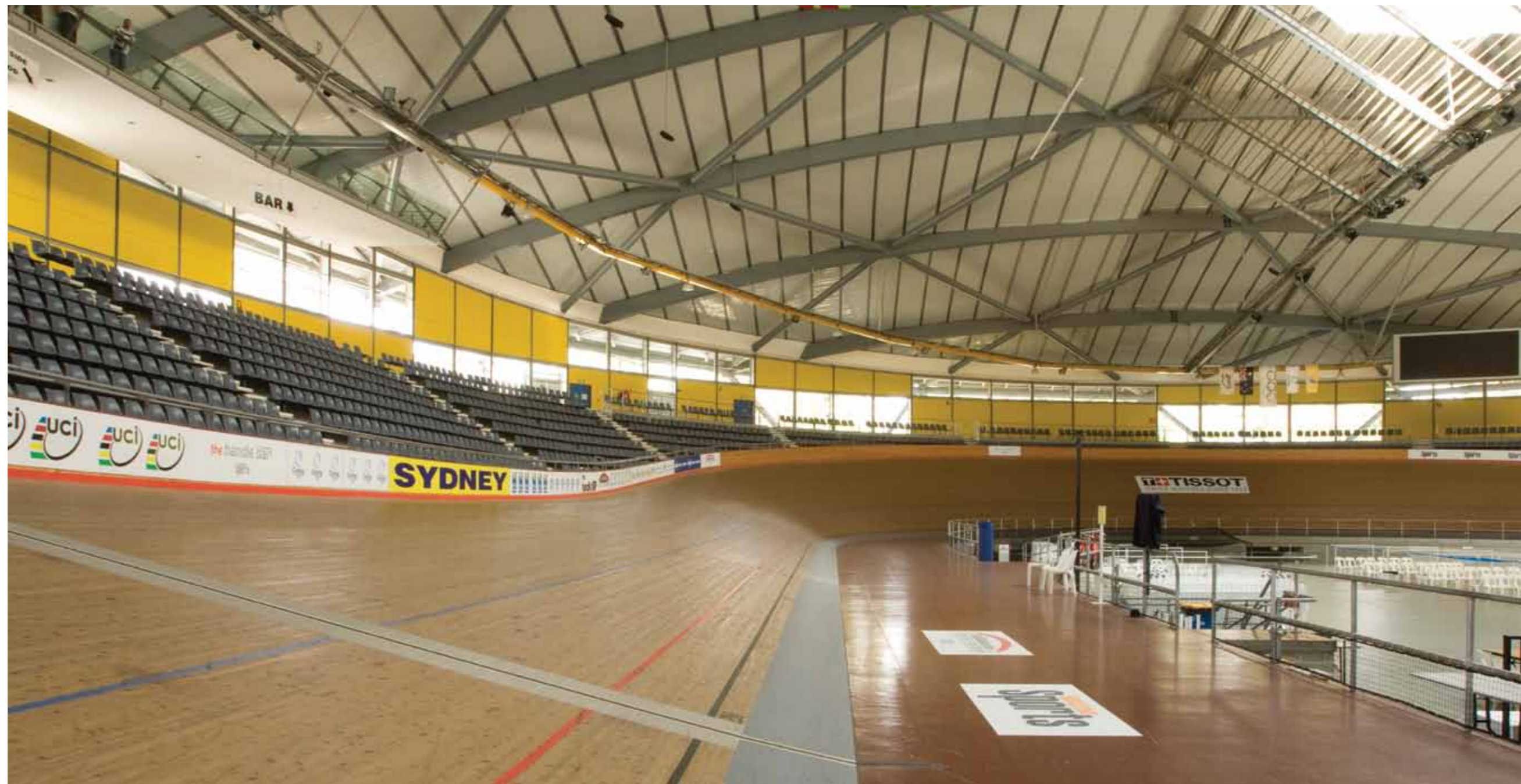
Not comfortable to go with convention, Rollco leads the market in assisting Australia's leading architects realise their visions.

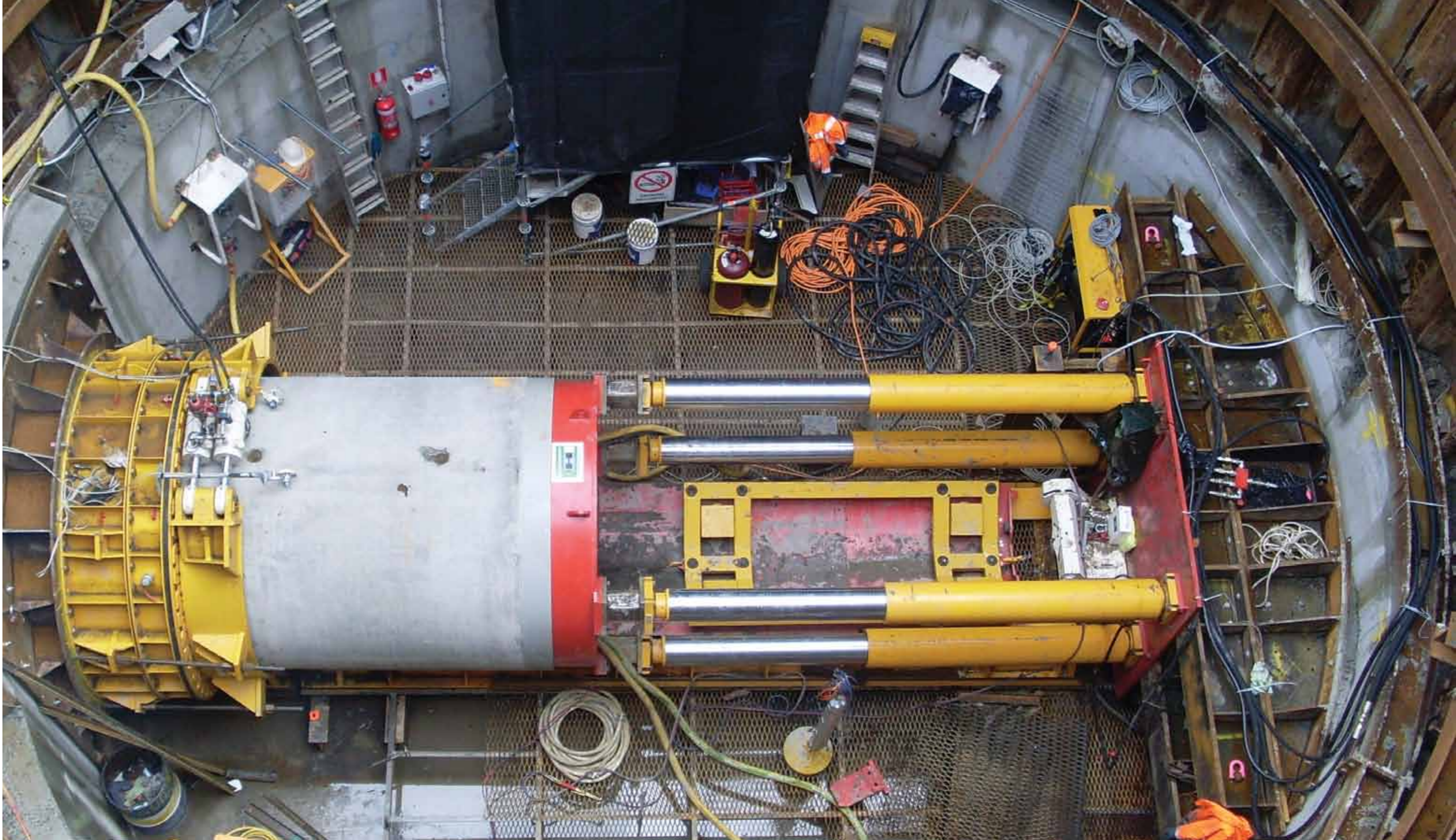
› CAPABILITIES

C15024	8000mm min radius
C20024	35000mm min radius
C25024	75000mm min radius

This table is a guide and we encourage you to call with the specifics of your project

For more information, please log on to www.rollco.com.au or call the Revesby office on (02) 9772 4188





09: INFRASTRUCTURE

Rollco has participated in some of the nations largest infrastructure projects since opening its doors in 1982.

From the supply of tunnel sets to the Lane Cove tunnel, rolling pipe for fire systems within the Cross City Tunnel

to the manufacture of hundreds of tonnes of steel walers for Sydney's Desalination Plant.

Rollco's adherence to strict quality control measures has ensured tight manufacturing timetables have been maintained.

For more information, including case studies, log on to www.rollco.com.au or call our Revesby office on (02) 9772 4188



› *Rolco Steel Processing facilities Revesby Sydney NSW*



› REAR COVER
LANE COVE TUNNEL

The Lane Cove Tunnel in Sydney was constructed by Thiess John Holland. Rollco provided fabricated tunnel sets used throughout the tunnel system.



CONTACT

22 Queen Street
Revesby NSW 2212

PO Box 4455
Milperra 1891

T 02 9772 4188
F 02 9774 1842

E rollco@rollco.com.au
W www.rollco.com.au

MATERIAL

Mild Steel
Boiler Plate
Rail
Billets
Stainless Steel
Aluminum
Extrusions
Round Bar
Bisalloy
Tee Section
Sheet Metal